



WESTMIN 795

3 BED + FLEX

2.5 BATH

INTERIOR 1,475 SQ. FT.

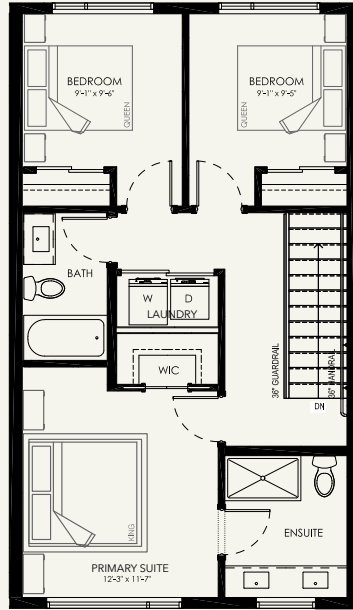
OUTDOOR LOUNGE 118 SQ. FT.

WESTMIN795.CA

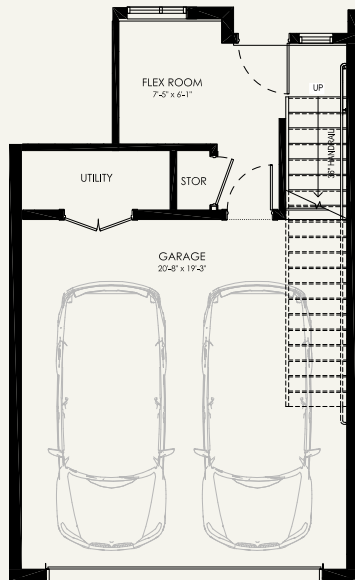
📞 250-274-3552

✉ sales@westmin795.ca

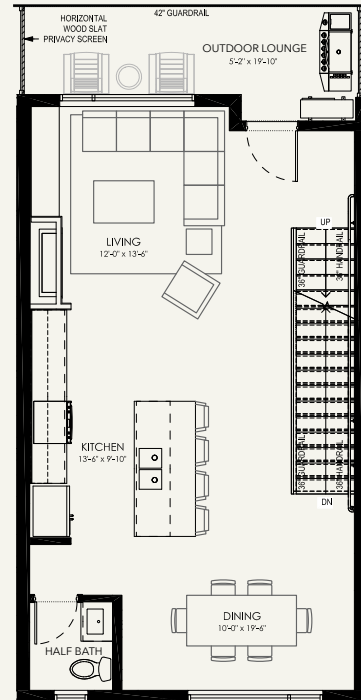
📍 795 Westminster Avenue West,
Penticton, BC



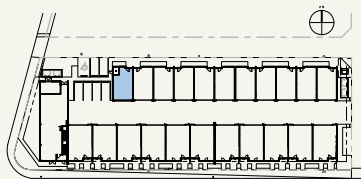
UPPER FLOOR



GROUND FLOOR



MAIN FLOOR



SHOREWAY (#125)

CANTIRO



Dimensions, sizes, specifications, layouts and materials are approximate only and subject to change without notice. E.&O.E. The flex room on the main level of this unit features a reduced square footage to accommodate a mechanical room as part of the building's safety features.