



# WESTMIN 795

3 BED + FLEX

2.5 BATH

INTERIOR 1,475 SQ. FT.

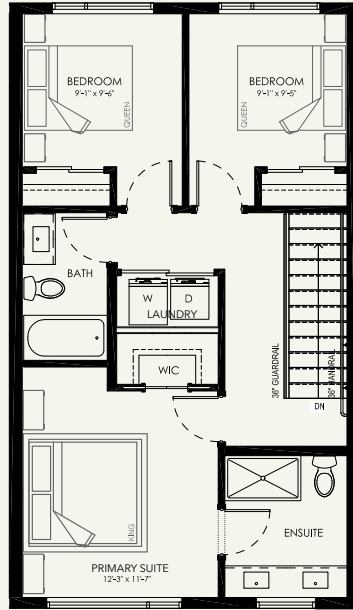
OUTDOOR LOUNGE 118 SQ. FT.

**WESTMIN795.CA**

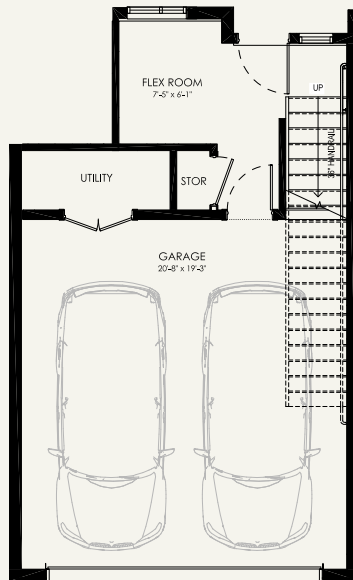
250-900-2949

rent@westmin795.ca

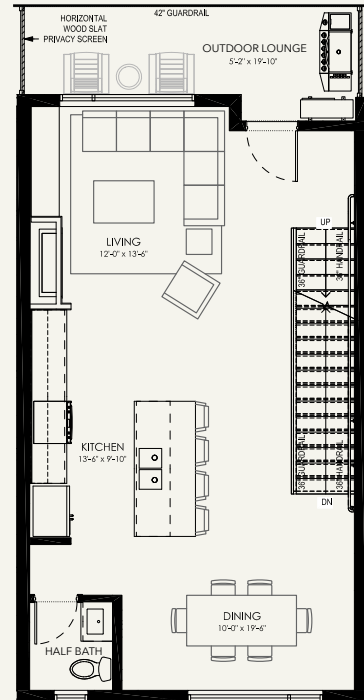
795 Westminster Avenue West,  
Penticton, BC



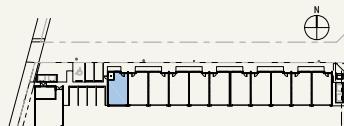
UPPER FLOOR



GROUND FLOOR



MAIN FLOOR



CANTIRO



Dimensions, sizes, specifications, layouts and materials are approximate only and subject to change without notice. E.&O.E. The flex room on the main level of this unit features a reduced square footage to accommodate a mechanical room as part of the building's safety features.

SHOREWAY (#125)